



RODAVIGO, S.A.
RODAMIENTOS VIGO, S.A.

www.rodavigo.net

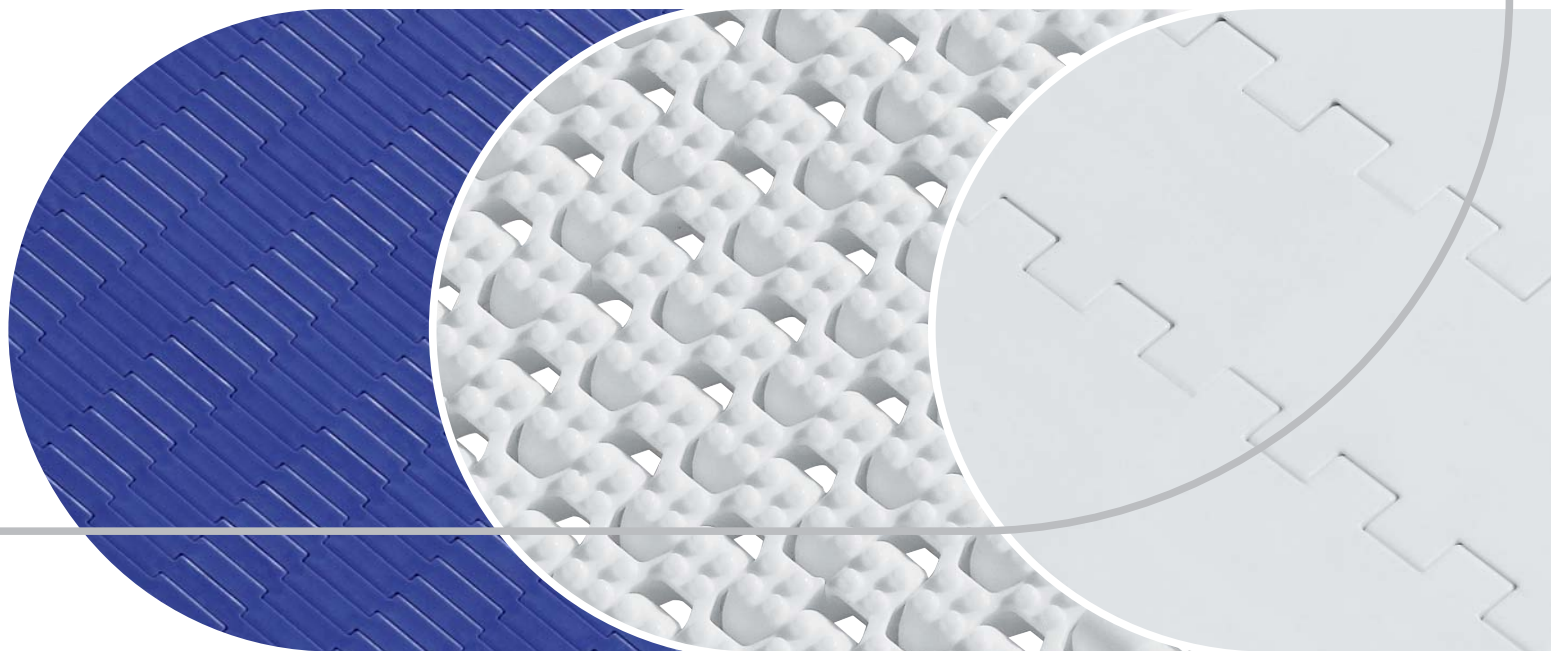
+34 986 288118
Servicio de Att. al Cliente

Products
Media No. 4128



HabasitLINK® Plastic Modular Belts Product Overview

Habasit– Solutions in motion



Contents

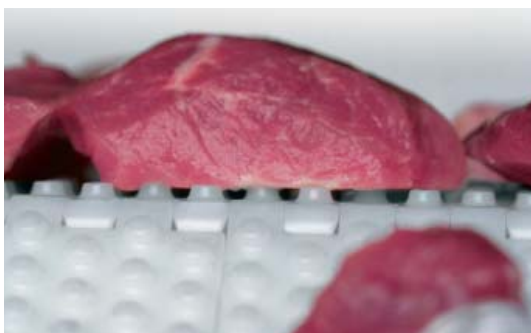
2

Product features	3
Product overview	4
Accessories	11
Features and benefits	12
Services	13
The Habasit Solution	14
Contacts	16

This **disclaimer** is made by and on behalf of Habasit and its affiliated companies, directors, employees, agents and contractors (hereinafter collectively "HABASIT") with respect to the products referred to herein (the "Products"). SAFETY WARNINGS SHOULD BE READ CAREFULLY AND ANY RECOMMENDED SAFETY PRECAUTIONS BE FOLLOWED STRICTLY! Please refer to the Safety Warnings herein, in the Habasit catalogue as well as installation and operating manuals.

All indications / information as to the application, use and performance of the Products are recommendations provided with due diligence and care, but no representations or warranties of any kind are made as to their completeness, accuracy or suitability for a particular purpose. The data provided herein are based on laboratory application with small-scale test equipment, running at standard conditions, and do not necessarily match product performance in industrial use. New knowledge and experience may lead to re-assessments and modifications within a short period of time and without prior notice.

EXCEPT AS EXPLICITLY WARRANTED BY HABASIT, WHICH WARRANTIES ARE EXCLUSIVE AND IN LIEU OF ALL OTHER WARRANTIES, EXPRESS OR IMPLIED, THE PRODUCTS ARE PROVIDED "AS IS". HABASIT DISCLAIMS ALL OTHER WARRANTIES, EITHER EXPRESS OR IMPLIED, INCLUDING, BUT NOT LIMITED TO, IMPLIED WARRANTIES OF MERCHANTABILITY, FITNESS FOR A PARTICULAR PURPOSE, NON-INFRINGEMENT, OR ARISING FROM A COURSE OF DEALING, USAGE, OR TRADE PRACTICE, ALL OF WHICH ARE HEREBY EXCLUDED TO THE EXTENT ALLOWED BY APPLICABLE LAW. BECAUSE CONDITIONS OF USE IN INDUSTRIAL APPLICATION ARE OUTSIDE OF HABASIT'S CONTROL, HABASIT DOES NOT ASSUME ANY LIABILITY CONCERNING THE SUITABILITY AND PROCESS ABILITY OF THE PRODUCTS, INCLUDING INDICATIONS ON PROCESS RESULTS AND OUTPUT.





Product features

3

Construction

Habasit plastic modular belts are assembled in a bricklayed pattern for lateral strength, and this feature allows the construction of virtually any width and length. Our custom-made belts are available with flights and side guards as an integral part of the belt, and are secured with full-length plastic hinge rods.

Materials

Each belt style is available in food approved materials to meet a wide range of application requirements, operating temperatures and chemical resistance.

Sprockets

Injection molded sprockets feature a design which allows easy access for sanitation across the width of the conveyor shafts. Smooth lines and radiused corners virtually eliminate areas where debris can be trapped. There is a complete range of pitch diameters and bore sizes to suit most applications.

Accessories

Habasit offers a wide range of modular belt accessories like flights, side guards and HabiPLAST® guide rails.

Quick installation

Because of the modular design and easy rod retention, HabasitLINK® belts can be installed within minutes without using complicated tools or fasteners.

Positive drive and tracking

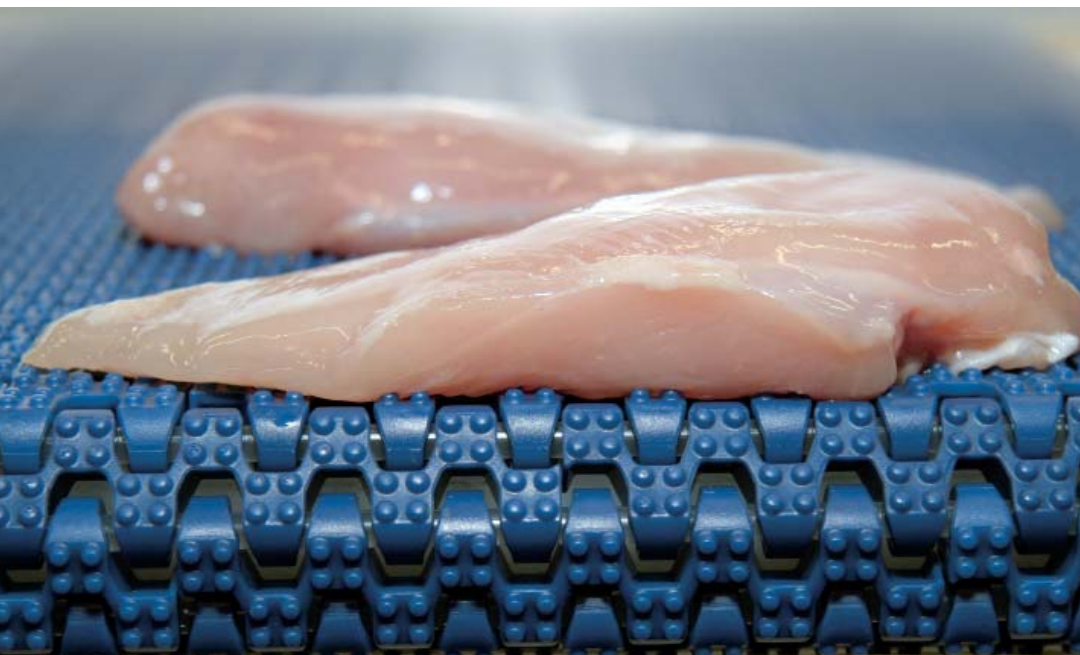
Sprockets eliminate the need for high-tension systems by positively engaging the belt, maintaining proper belt alignment and avoiding edge damage.

Improved sanitation

Habasit's oblong hole improves access to the hinge rod along the entire width of the belt. The hinge design redirects water flow to improve sanitation.

Ease of maintenance

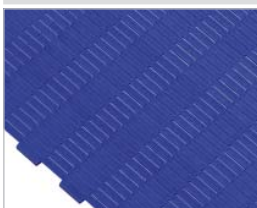
General maintenance and repairs can be completed with a minimum of downtime.



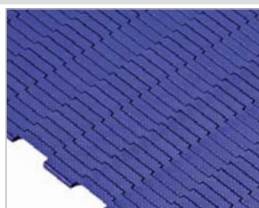
Product overview

4

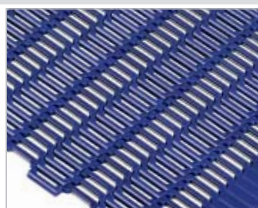
0.3" pitch belting



M0870
Micropitch Flat Top

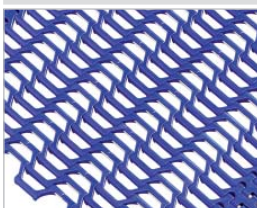


M0873
Micropitch Non Slip



M0885
Micropitch Flush Grid

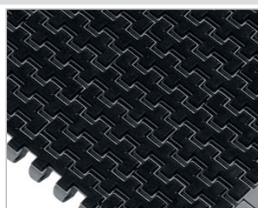
0.5" pitch belting



M1185
Flush Grid



M1220
Flat Top



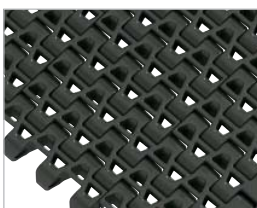
M1220
GripTop



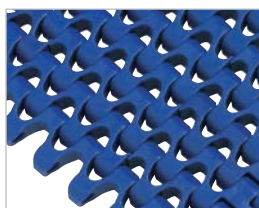
M1220
HighGrip-L



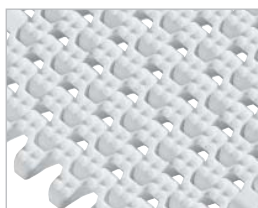
M1220
ActivXchange



M1230
Flush Grid



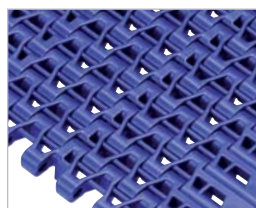
M1233
Flush Grid



M1234
Nub Top Flush Grid



M1280
Flush Grid



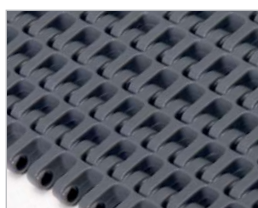
M1280
ActivXchange



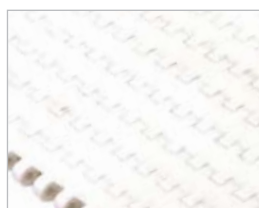
SM605
Smooth Mesh



SM605
GripTop



SM605
Curved Mesh



HDS605 FT
Flat Top



HDS605 TT
Texture Top



RS511
Tight Turn Radius
Flush Grid



RS515
Tight Turn Radius
Curved Top

Product overview

5

0.75" pitch belting



106 FT
Flat Top



106 10
Mesh Top 10% open



106 22
Flush Grid 22% open



106 RT
Rough Top



106 V
Vacuum

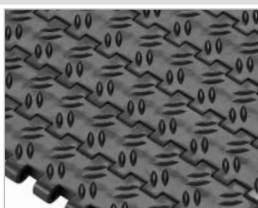
1" pitch belting



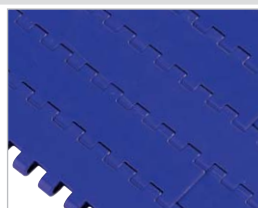
M2420
Flat Top



M2420
ActivXchange



M2423
Non Slip



M2470
Flat Top



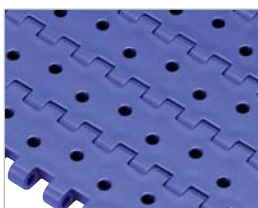
M2470
Flat Top MTW



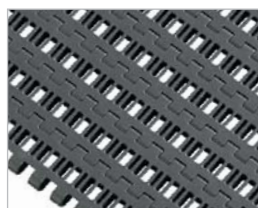
M2470
GripTop



M2470
ActivXchange



M2472
Perforated Flat Top



M2480
Flush Grid



M2480
ActivXchange



M2510
Flat Top



M2511
Mesh Top



M2514
Nub Top



M2516
Diamond Top



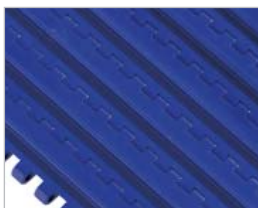
M2520
Flat Top



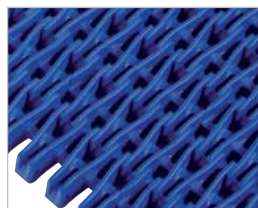
M2520
GripTop



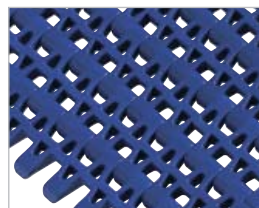
M2520
Roller Top



M2527
Minirib



M2531
Raised Rib

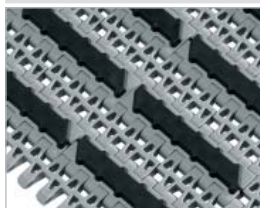


M2533
Flush Grid

Product overview

6

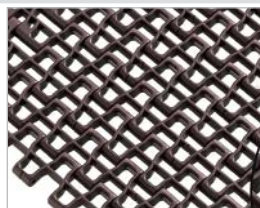
1" pitch belting



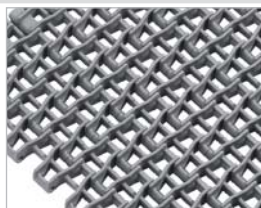
M2533
GripTop



M2533
Roller Top



M2585
Flush Grid



M2586
Raised Rib



M2540
Radius Flush Grid



M2540
Radius Flush Grid MTW



M2540
Radius GripTop



M2540
Roller Top



M2544
Tight Radius



M2544
Tight Radius MTW



M2544
Tight Radius GripTop



M2620
Flat Top Heavy Duty



M2620
GripTop



M2620
Roller Top LBP



M2623
Non Slip



M2670
Flat Top Heavy Duty



M2670
Flat Top Heavy Duty MTW



M2670
GripTop



M2670
ActivXchange



M2791
Radius Flush Grid MTW



IS610 GT
GripTop



IS610-R
Radius Flush Grid



CT610-R
Radius Curved Top



ST610
Flat Top



VT610
Vented Top

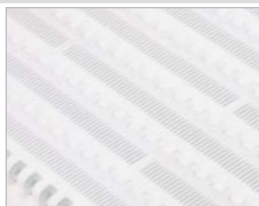
Product overview

7

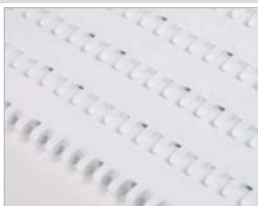
1" pitch belting



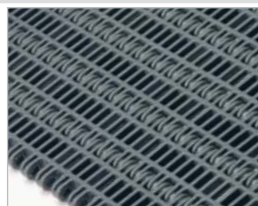
HDS610 FT
Flat Top



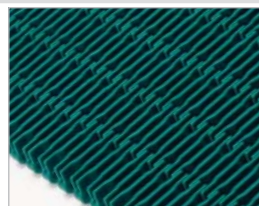
HDS610 CVT
Curved Vented Top



208 FT
Flat Top



208 35
Flush Grid 35% open



208 RR
Raised Rib

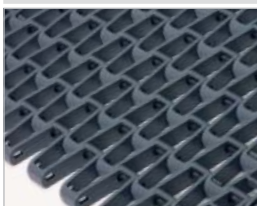


MB610
Heavy Duty Flat Top

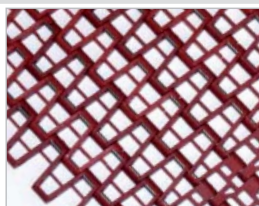


MB610 MTW
Heavy Duty Flat Top
mold to width

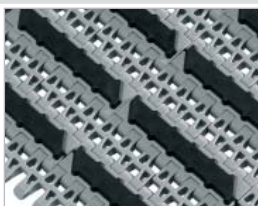
1.1" pitch belting



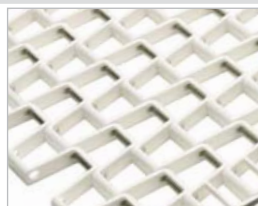
F51
0.5" x 1" Flat Wire



F52 Smart Fit
0.5" x 0.5" Flat Wire



F53 Smart Fit
0.5" x 0.5"
Raised Rib Flat Wire



F54
1" x 1" Flat Wire

1.2" pitch belting



PR612 1.6
Tight Turn
Radius Flush Grid



PR612 2.2
Radius Flush Grid

Product overview

8

1.5" pitch belting



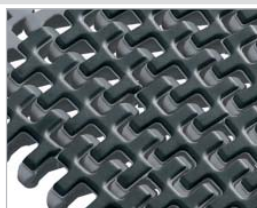
M3840
Radius Flush Grid



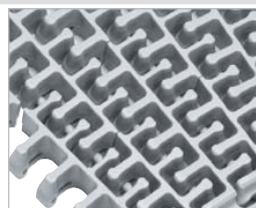
M3840
Roller Top



M3843
Tight Radius



M3843
Tight Radius GripTop



M3892
Raised Deck



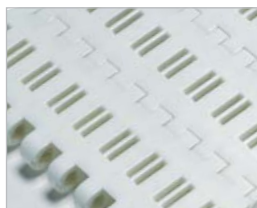
SP615



IS615-R
Radius Flush Grid



ST615
Flat Top



VT615
Vented Top

1.75" pitch belting



CC41
Flat Top



CC42
Vented Top

2" pitch belting



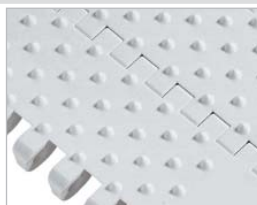
M5010
Flat Top



M5010
Roller Top



M5011
Perforated Flat Top



M5013
Cone Top



M5014
Nub Top



M5015
Flat Top



M5015
GripTop



M5020
Flat Top Heavy Duty



M5021
Perforated Flat Top

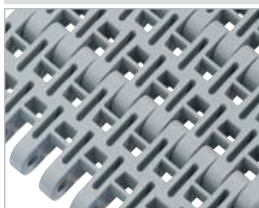


M5023
Non Slip

Product overview

9

2" pitch belting



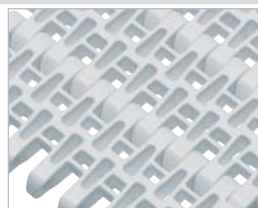
M5032
Flush Grid Heavy Duty



M5032
Roller Top



M5032
Roller Top 0°, 45°, 90°



M5033
Flush Grid



M5033
Roller Top



M5060
Flat Top



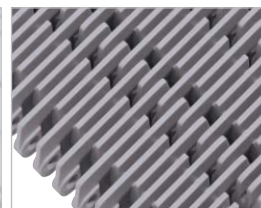
M5064
Nub Top



M5065
Flat Top HyCLEAN



M5067
Minirib



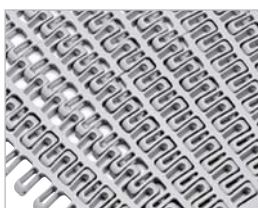
M5131
Raised Rib



M5182
Roller Top 90°



M5290
Radius Flush Grid



M5293
Tight Radius



SP620
Flush Grid



SE620
Straight Edge Flush Grid



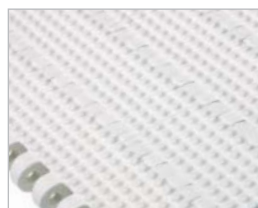
IS620-R
Radius Flush Grid



HDS620
Flat Top



HDSCT620
Curved Top



HDSEZR620
Easy Release



HDSVT620
Vented Top



HDU620 FT
Flat Top



HDU620 VT
Vented Top



HDU620 CT
Curved Top



HDU620 EZR
Easy Release



FF620
Fluid-Flo



Product overview

10

2" pitch belting



FF620 WR
Fluid-Flo with Ribs



FF620 MC
Fluid-Flo with Mini-Cleat



MB620 FT
Flat Top



MB620 VT
Vented Top



MB620 TT
Tread Top



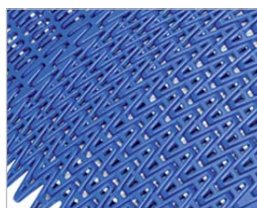
PR620
Spiral Pro



PR620 SPS
Spiral Pro Small
Product Surface



PR620 SPS CT
Spiral Pro Small Product
Surface Curved Top



PR620 TTR
Spiral Pro Tight Turn
Radius

2.2" pitch belting



M5482
Roller Top

2.5" pitch belting



M6360
Flat Top



M6420
Flat Top Heavy Duty



M6423
Non Slip



M6424
Non Slip Perforated



M6425
Reel Top MTW

Accessories

11

Sprockets



Solid sprocket
Double row of teeth



Split sprocket
Double row of teeth



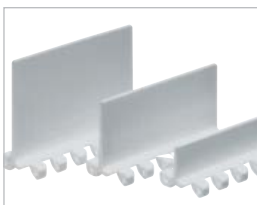
HyCLEAN sprocket
Double row of teeth



Lug type sprocket
Single teeth row

Flights, side guards and lane dividers

- Flight modules are injection-molded one-piece designs that become an integral part of the belt when assembled. The flight prevents the product from slipping back while being moved upwards.
- Side guards positioned at the edges of the belt stop goods falling off. Details about standard and clip-on side guards can be found in the respective product data sheets.



Flights



Curved flights



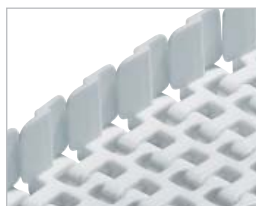
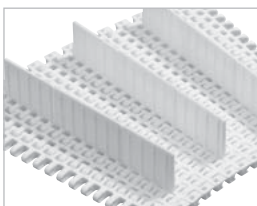
Scoops



Side guards



Lane dividers

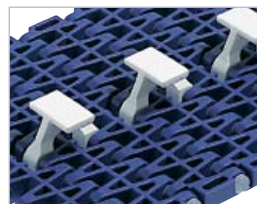


Hold-down tabs, hold-down devices and finger transfer plates

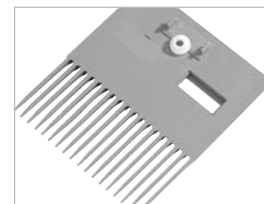
- Hold-down tabs applied in radius belts are used to prevent the belt from lifting in the curve sections.
- Hold-down devices are used in Z-conveyors (swan-neck) to avoid belt buckling in the back-bending section.
- Finger transfer plates (combs) are installed at the belt ends of a raised rib belt. The fingers extend between the ribs of the belt for smooth product transfer.



Hold-down tabs



Hold-down devices
(reverse side)

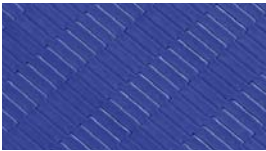

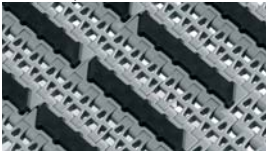




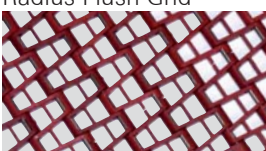



Finger transfer plate

Features and benefits

12

Plastic modular belts are widely used in many industries, where their specific product features provide numerous benefits to our customers.

	Key features	Your benefits
 Micropitch	<ul style="list-style-type: none"> • Smallest belt pitch with rod distance 8 mm (0.3") • Nosebar diameter 6 mm (0.24") 	<ul style="list-style-type: none"> → Smallest longitudinal transfer between two conveyors → Perfect for small footprint products
 Flat Top	<ul style="list-style-type: none"> • Up to 24" wide single modules available • Dynamic open hinge • Strong link design • Broad range of accessories 	<ul style="list-style-type: none"> → Less soiling and waste → Robust, reliable performance → Less link breakage → No trap for debris, easy to clean → Reduced downtime
 GripTop	<ul style="list-style-type: none"> • Soft GripTop surface • Positively linked to module • Available for straight and radius belts 	<ul style="list-style-type: none"> → For steep inclined and declined applications → Abrasion resistant, long belt life → Straight and radius sections with one drive
 Non Slip	<ul style="list-style-type: none"> • Non slip surface • Strong and stiff belt design • Antistatic material 	<ul style="list-style-type: none"> → Safety platform for workers → Long belts with low speed variation → No electrical charge up
 Nub Top	<ul style="list-style-type: none"> • Solid plate with nub top structure • Dynamic open hinge • Strong link design 	<ul style="list-style-type: none"> → Easy release = limited soiling and waste → Robust, reliable performance → Good grip and exact product positioning
 Roller Top	<ul style="list-style-type: none"> • Large and robust roller in belt • Rollers in 15° step orientation • Small roller pattern 	<ul style="list-style-type: none"> → For heavy duty transports → For transversal loading and discharging → For accumulation or move product to edge → For small footprint products
 Radius Flush Grid	<ul style="list-style-type: none"> • Suitable for straight and radius applications • Open area • Open hinge 	<ul style="list-style-type: none"> → Straight and radius sections with one drive → Excellent for cooling and draining → Easy to clean
 Smart Fit	<ul style="list-style-type: none"> • Large open area • High temperature materials 	<ul style="list-style-type: none"> → For increased air or fluid flow → Fast product cooling → For high temperature applications up to 240 °C (464 °F)
 Spiral Pro	<ul style="list-style-type: none"> • Suitable for spiral application • Open area • Open hinge 	<ul style="list-style-type: none"> → For spiral systems with long belts up to 1,000 m (3,000 ft) → For increased air flow → Easy to clean

Service

13

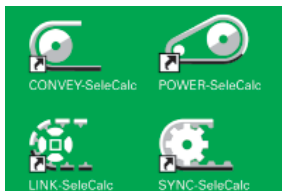
Comprehensive services are central to Habasit's belting solution approach.

As committed partners to our customers, we are dedicated to sharing our knowledge and to providing full support.



Comprehensive consulting and technical support

Habasit offers the best consulting and technical support on the belting market. Everything revolves around our customers and each affiliate has its own belting experts. The Habasit team is proud to provide the highest levels of support together with top-quality products that have been leaders on the global market for decades.



Assistance with belt selection and calculation

We will select and calculate the most suitable belt for your specific application. You also may do this yourself with our state-of-the-art Habasit selection and calculation program "SeleCalc". To order this program free of charge, simply call your nearest Habasit partner or contact: info@habasit.com.



Fabrication, assembly and local installation services for quick reaction times

We make belts endless or assemble modular belts or chains, either at our own locations or on-site directly on your machine or system. Habasit operates over 30 affiliated companies worldwide, each with its own inventory, fabrication, assembly and service facilities. Together with our representative offices and numerous qualified distributors, we can react quickly, competently and reliably to satisfy all your demands.



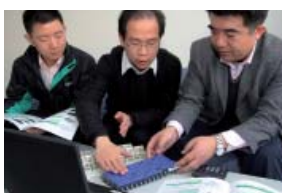
Customer training programs

Habasit offers training programs and provides support tools to ensure optimal use of our products and to prolong their lifetimes. Training on fabrication, installation, assembly, maintenance and belt repair takes place at Habasit sites or at your location.



Belt monitoring, inspections, analyses and process optimization proposals

We organize and handle belt maintenance, inspections, analyses and surveys for your locations. On request we will also work with you to develop optimization proposals, for example, to achieve added value from the machinery or process output.



Design assistance for customized solutions

Habasit believes in partnership. Our engineering team will work closely with your engineers on joint design developments, preferably from a very early stage. We particularly recommend this for projects involving new technologies or large-scale modifications and adaptations.

The Habasit solution

14



Customers first

At Habasit we understand that our success depends on your success. This is why we offer solutions, not just products; partnership, not just sales. Since our foundation in 1946, Habasit has brought this understanding of customer needs to life every day and for every application. That's why we're the No. 1 in belting today. Worldwide. Learn more on www.habasit.com

Committed to innovation

Because our customers belting challenges and needs never cease, we consistently dedicate a substantial percentage of our employees and resources to the research and development of new products and solutions.

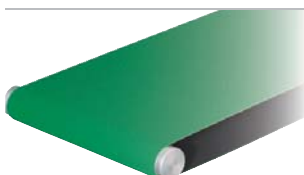
Certified for quality

We deliver the highest quality standards not only in our products and solutions, but also in our employees' daily work processes. Habasit AG is certified according to ISO 9001:2008.



Worldwide leading product range

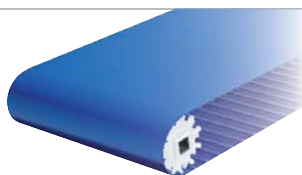
Habasit offers the largest selection of belting, conveying, processing and complementary products in the industry. Our response to any request is nothing less than a specific, tailor-made solution.



Fabric-based conveyor and processing belts
HabaFLOW®



Plastic modular belts
HabasitLINK®



Positive drive conveyor and processing belts
Habasit Cleandrive™



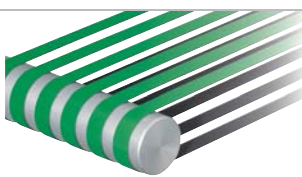
Power transmission belts
HabaDRIVE®



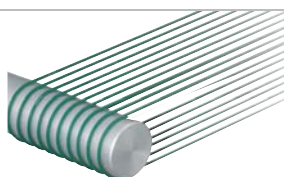
Timing belts
HabaSYNC®



Chains (slat and conveyor chains)
HabaCHAIN®



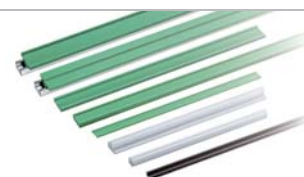
Machine tapes



Round belts



Seamless belts



Profiles, Guides, Wear strips
HabiPLAST®



Fabrication tools (joining tools)



Gearmotors
Electric motors
Motion control



RODAVIGO, S.A.

RODAMIENTOS VIGO, S.A.

www.rodavigo.net

+34 986 288118

Servicio de Att. al Cliente



Australia

Habasis Pty Ltd.
Silverwater
Phone: +61 1300 945 455
www.habasis.com.au

Austria

Habasis GmbH
Wien
Phone: +43 1 690 66
www.habasis.at

Belgium

Habasis Belgium N.V.
Zaventem
Phone: +32 27 250 430
www.habasis.be

Canada

Habasis Canada Ltd.
Oakville
Phone: +1 905 827 41 31
www.habasis.ca

China

Habasis East Asia Ltd.
Hong Kong
Phone: +85 221 450 150
www.habasis.com.hk

Habasis (Shanghai) Co. Ltd.
Shanghai
Phone: +8621 5488 1228
Phone: +8621 5488 1218
www.habasis.com.hk

France

Habasis France S.A.S.
Mulhouse
Phone: +33 389 338 903
www.habasis.fr

Germany

Habasis GmbH
Eppertshausen
Phone: +49 6071 969 0
www.habasis.de

India

Habasis-Iakoka Pvt. Ltd.
Coimbatore
Phone: +91 422 262 78 79
www.habasisiakoka.com

Italy

Habasis Italiana SpA
Customer Care:
Phone: 199 199 333
For int. calls: +39 0438 911 444
www.habasis.it

Japan

Habasis Nippon Co. Ltd.
Yokohama
Phone: +81 45 476 0371
www.habasis.co.jp

Netherlands

Habasis Netherlands BV
Nijkerk
Phone: +31 332 472 030
www.habasis.nl

New Zealand

Habasis Ltd.
Auckland
Phone: 0800 000 070
www.habasis.co.nz

Poland

Habasis Polska Sp. z o.o.
Dąbrowa Górnicza
Phone: +48 32639 02 40
www.habasis.pl

Russia

OOO Habasis Ltd.
St. Petersburg
Phone: +7 812 600 40 80
www.habasis.ru

Singapore

Habasis Far East Pte. Ltd.
Singapore
Phone: +65 686 255 66
www.habasis.com.sg

Spain

Habasis Hispanica S.A.
Barberà del Vallès
Phone: +34 937 191 912
www.habasis.es

Sweden

Habasis AB
Hindas
Phone: +46 30 122 600
www.habasis.se

Switzerland

Habasis GmbH
Reinach
Phone: +41 61 577 51 00
www.habasis.ch

Taiwan

Habasis Rossi (Taiwan) Ltd.
Taipei Hsien
Phone: +886 2 2267 0538
www.habasis.com.tw

Turkey

Habasis Kayis San. Ve Tic. Ltd. Sti.
Yenibosna-Bahcelievler-Istanbul
Phone: +90 212 654 94 04
www.habasis.com.tr

Ukraine

Habasis Ukraine LLC.
Vinnitsa
Phone: +38 0432 58 47 35
www.habasis.ua

United Kingdom and Ireland

Habasis (UK) Ltd.
Silsden
Phone: +44 844 835 9555
www.habasis.co.uk

USA

Habasis America
Conveyor belts, power
transmission belts, gearmotors
Suwanee, Georgia
Phone: +1 800 458 6431
www.habasisamerica.com

Habasis America
Seamless belts, timing belts
Middletown, Connecticut
Phone: +1 860 632 2211
www.habasisamerica.com

Rossi is one of Europe's largest manufacturers of gear reducers, gearmotors, inverters, standard and brakemotors, and is a member of the Habasis Group.

Rossi S.p.A.
Via Emilia Ovest 915/A
41123 Modena – Italy
Phone: +39 059 33 02 88
www.rossi-group.com
info@rossi-group.com

Headquarters

Habasis AG
Römerstrasse 1
CH-4153 Reinach, Switzerland
Phone +41 61 715 15 15
Fax +41 61 715 15 55
info@habasis.com
www.habasis.com

Registered trademarks
Copyright Habasis AG
Subject to alterations
Printed in Switzerland
Publication data:
4128MOD.BRO-en0114HOR